
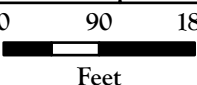
 <p>ENVIRONMENTAL CONSULTANTS</p> <p>679 East 2nd Ave. Unit E2, Durango, Colorado 81301 www.sme-env.com (970) 259-9595</p>	Drawn by:	Rvwd. by:	Project No.:	SECONDARY SCREENING	
	SB	SM	220038		
	Date:	Rvsd. Date:	Scale:	OFFSITE ALTERNATIVES ANALYSIS INDIVIDUAL PERMIT TWILIGHT MEADOWS LOT 13R SAN JUAN COUNTY, CO	
	6/26/2023	NA	1:2,170		
					FIGURE 2

GENERAL NOTES

1. Project area boundary created by SME, based on surveyed boundary pins located in the field with a GPS unit, San Juan County Parcel Data and a parcel plat provided by Mountain Civil Consulting.

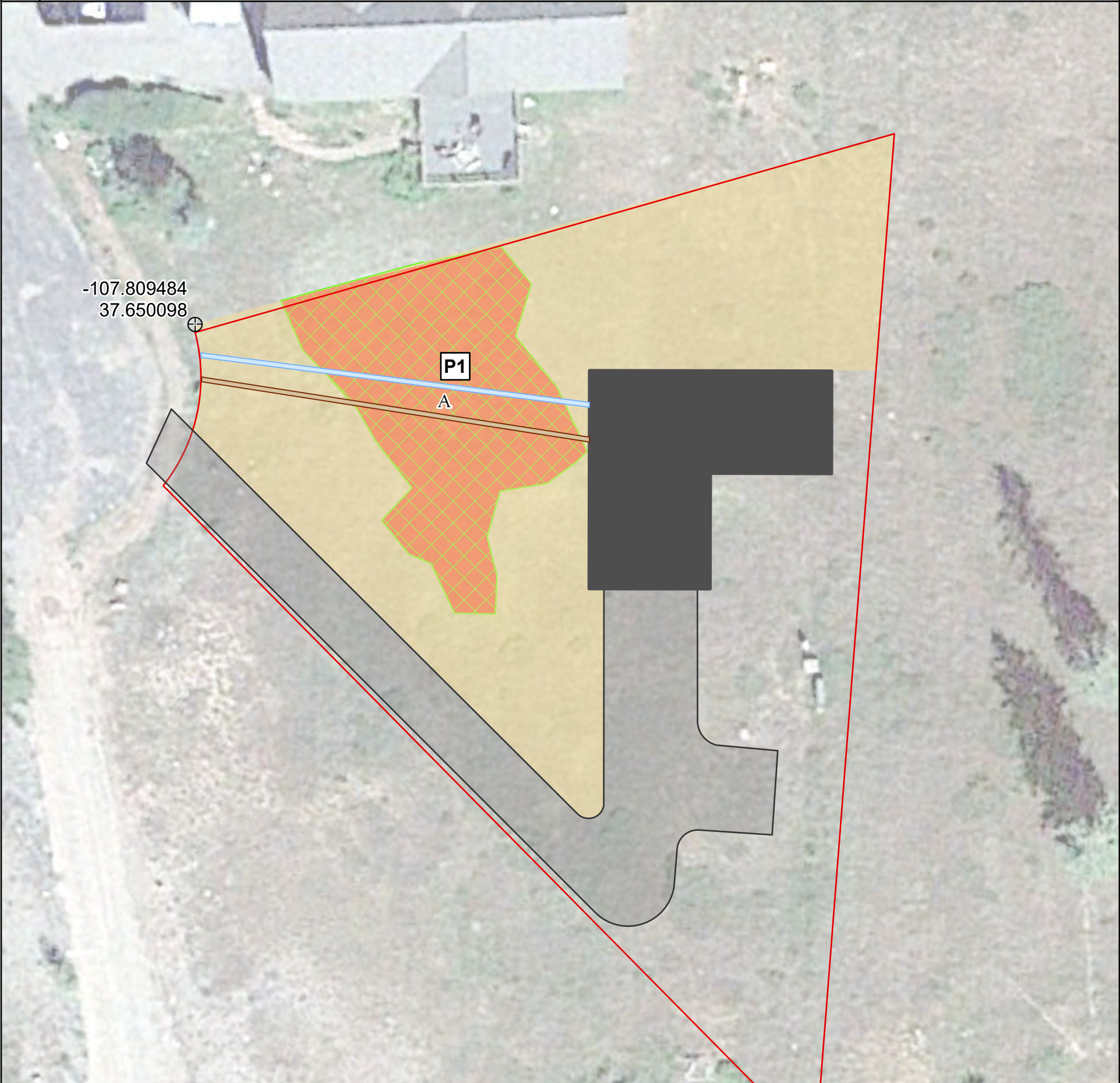
2. SME Environmental, Inc. (SME) staff visited the site on May 27, 2022 to assess and delineate the boundaries of wetlands and other Waters of the U.S. (WOUS) in the area of interest using the methodology defined in the Routine Determination procedure set forth in the U.S. Army Corps of Engineers Wetlands Delineation Manual (USACE 1987), the Regional Supplement to the Corps of Engineers Wetland Delineation Manual: Western Mountains, Valleys and Coast Region (USACE 2010), and A Guide to Ordinary High Water Mark (OHWM) Delineation for Non-Perennial Streams in the Western Mountains, Valleys, and Coast Region of the United States (USACE 2014).

3. The boundaries of wetlands and other WOUS were survey-located using a Trimble R1 GNSS Receiver (sub-meter accuracy).

4. Areas which likely satisfy the USACE criteria as wetlands and/or WOUS are labeled. Note that WOUS continue beyond the project area boundary.

5. Aquatic resource impact table represents acreages, square feet, linear footages and centroid locations (NAD83 State Plane) for temporary and permanent impacts proposed under Nationwide Permit 29.

6. Please be aware that impacts to WOUS may require authorization from Local, State and/or Federal regulatory agencies. The limits of impacts to jurisdictional wetlands and other WOUS shown hereon are based upon current plans and renderings for submission to the USACE for Nationwide Permit 29 request. Ancillary improvement types, layouts, and proposed uses may vary somewhat as long as the nature and scope of impacts to wetlands and other WOUS is not changed.



Lot 13R

Aquatic Resources

PEM Wetland

Aquatic Resources Impacts

Permanent (0.06 ac)

Mountain Civil Design

Asphalt Driveway

Proposed Residence

Sewer

Water

Improved Yard Area

Aquatic Resources Disturbance Table							
Dist. Area	Aqu. Res. Area	Aqu. Res. Type	Acres	Square Ft.	Linear Ft.	Centroid Y	Centroid X
P1	A	PEM Wetland	0.06	2,530	NA	37.65006	-107.80930
		TOTAL	0.06	2,530			

SME

ENVIRONMENTAL CONSULTANTS

679 East 2nd Ave. Unit E2
Durango, Colorado 81301
www.sme-env.com
(970) 259-9595

Drawn By: SB

Date: 6/26/2023

N

0

20

40

Feet

Rvwd. By: SM

Rvsd. Date: NA

Proj. No.: 220038

Scale: 1 in = 24 ft

AQUATIC RESOURCES IMPACTS MAP

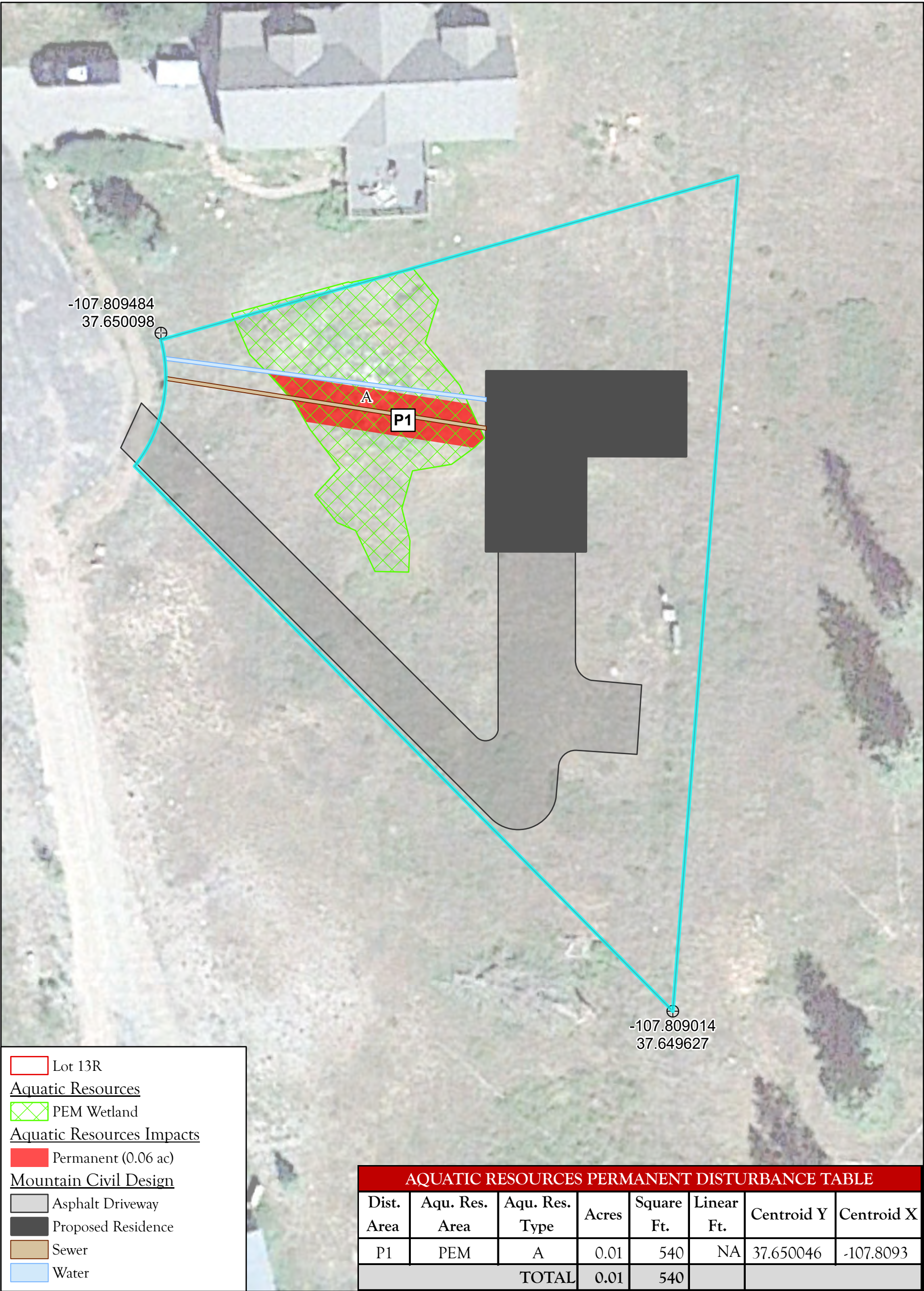
INDIVIDUAL PERMIT
TWILIGHT MEADOWS LOT 13R
SAN JUAN COUNTY, CO


ONSITE ALTERNATIVE A

FIGURE
4a

Document Path: S:\Projects\220038 Twilight Meadows Lot 13R\GIS\Twilight Meadows Lot 13R ArcPro\Twilight Meadows Lot 13R ArcPro.aprx; Figure 4a Impacts Map-IP.r; Coordinate System: NAD 1983 StatePlane Colorado South FIPS 0503 Feet

Sources: Aerial Imagery provided by Microsoft (acquisition date: September 8, 2011).





ENVIRONMENTAL CONSULTANTS
679 East 2nd Ave. Unit E2
Durango, Colorado 81301
www.sme-env.com
(970) 259-9595

Drawn By: SB

Rvwd. By: SM

Proj. No.: 220038

Date: 6/26/2023

Rvsd. Date: NA

Scale: 1 in = 24 ft

N

0

20

40

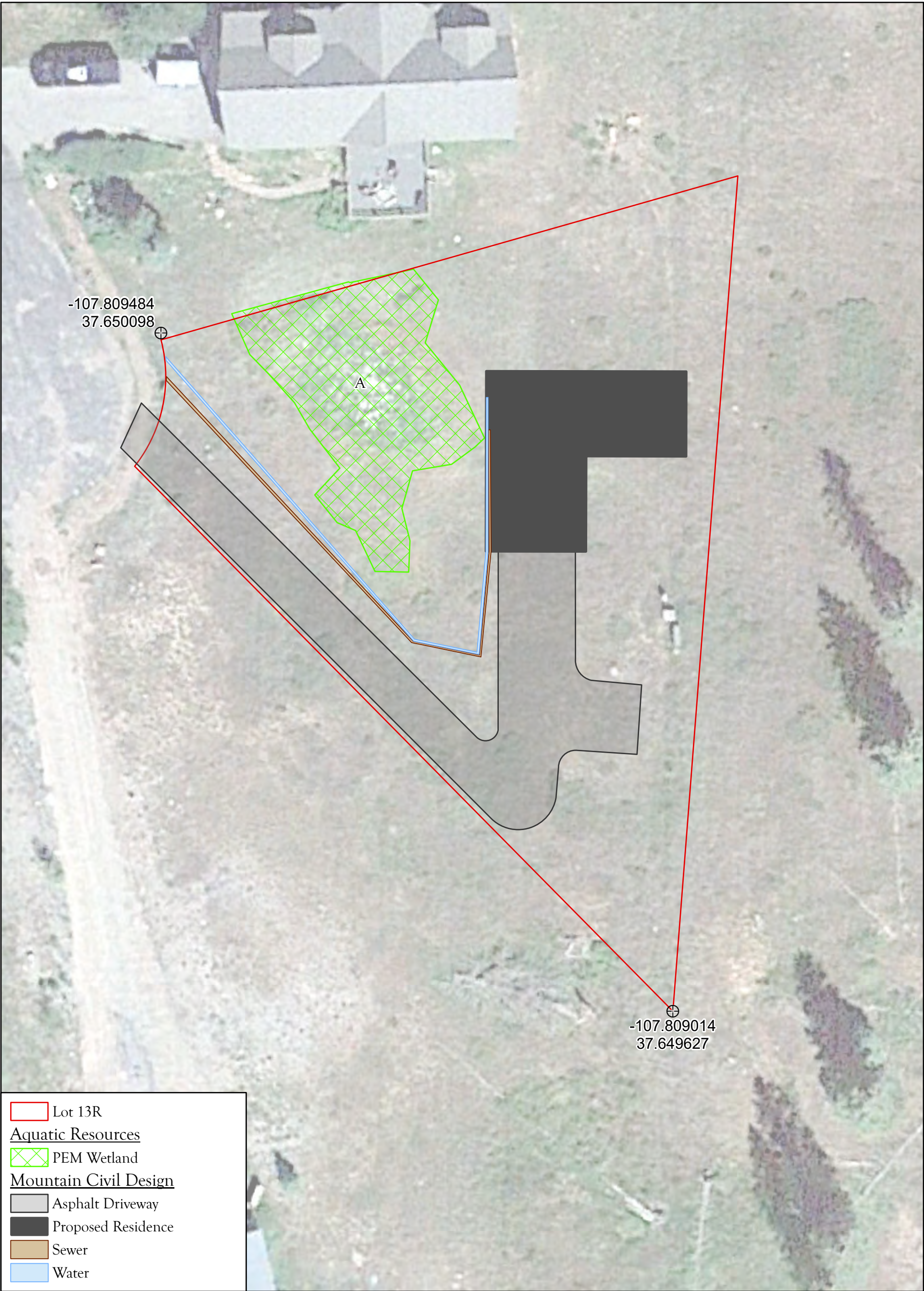
Feet


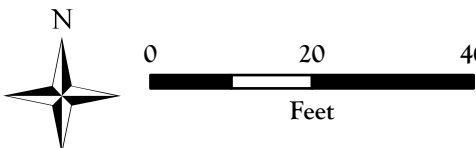
AQUATIC RESOURCES IMPACTS MAP

INDIVIDUAL PERMIT
TWILIGHT MEADOWS LOT 13R
SAN JUAN COUNTY, CO

ONSITE ALTERNATIVE B

FIGURE
4b



 <p>SME ENVIRONMENTAL CONSULTANTS 679 East 2nd Ave. Unit E2 Durango, Colorado 81301 www.sme-env.com (970) 259-9595</p>	Drawn By:	Rvwd. By:	Proj. No.:	AQUATIC RESOURCES IMPACTS MAP	
	SB	SM	220038		
	Date:	Rvsd. Date:	Scale:	INDIVIDUAL PERMIT TWILIGHT MEADOWS LOT 13R SAN JUAN COUNTY, CO	
	6/26/2023	NA	1 in = 24 ft		
	 <p>N 0 20 40 Feet</p>			ONSITE ALTERNATIVE C	
			FIGURE 4c		